

Teurow

ÜBERSENDET VON
SV Büro Melanie Boese-Czekala
immobilienbesichtigung@gmail.com

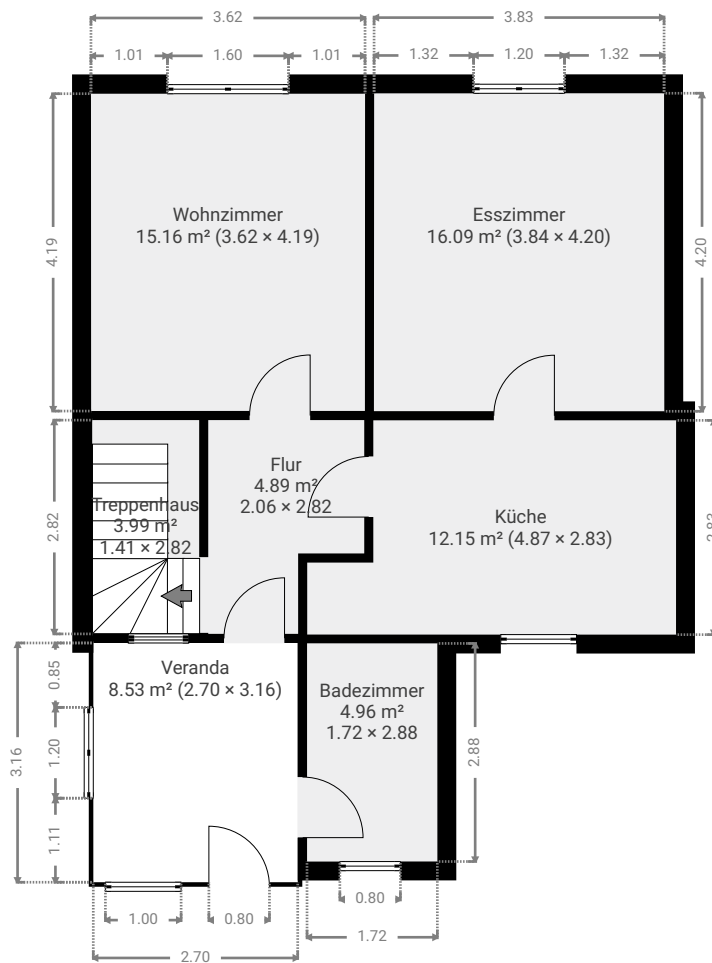
ERSTELLT AM
2024-09-16

STANDORT
26 Schulstraße
15757 Halbe
Brandenburg
Deutschland



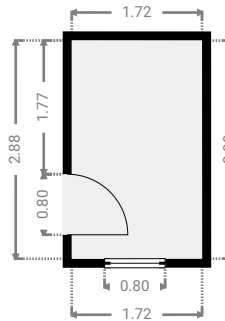
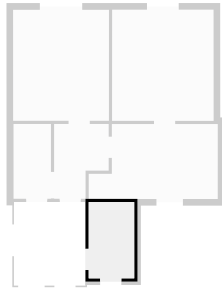
Etagen
2

▼ Erdgeschoss



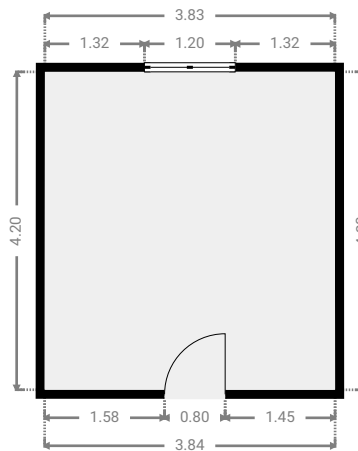
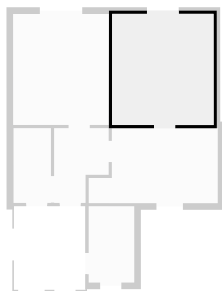
▼ Badezimmer Erdgeschoss

BREITE: 1.72 m · LÄNGE: 2.88 m
BEREICH: 4.96 m² · UMFANG: 9.20 m



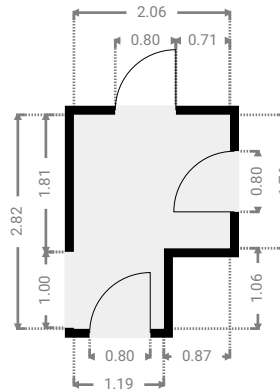
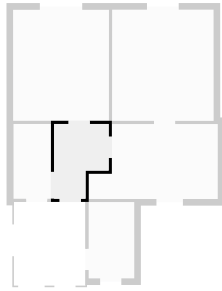
▼ Esszimmer Erdgeschoss

BREITE: 3.84 m · LÄNGE: 4.20 m
BEREICH: 16.09 m² · UMFANG: 16.06 m



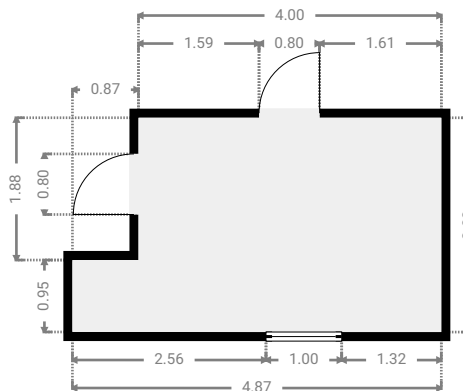
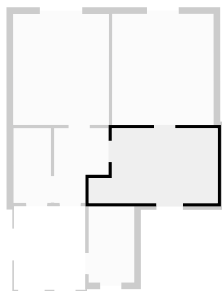
▼ **Flur**
Erdgeschoss

BREITE: 2.06 m • LÄNGE: 2.82 m
BEREICH: 4.89 m² • UMFANG: 9.77 m



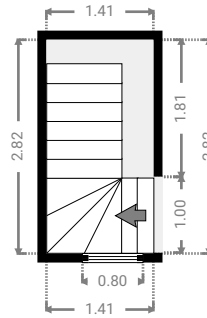
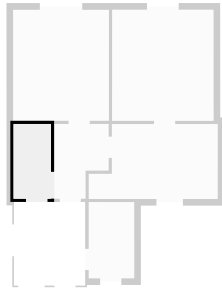
▼ **Küche**
Erdgeschoss

BREITE: 4.87 m • LÄNGE: 2.83 m
BEREICH: 12.15 m² • UMFANG: 15.40 m



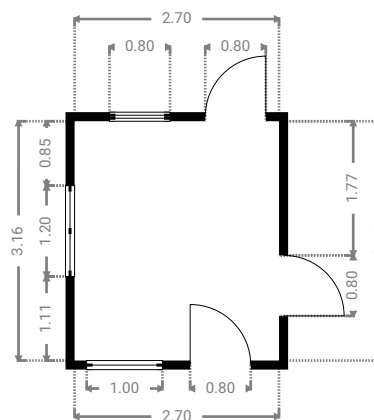
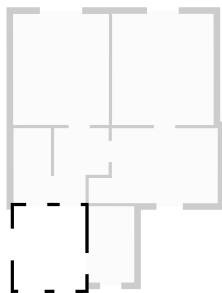
▼ Treppenhaus Erdgeschoss

BREITE: 1.41 m • LÄNGE: 2.82 m
BEREICH: 3.99 m² • UMFANG: 8.47 m



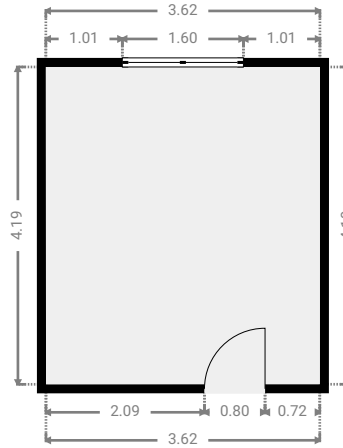
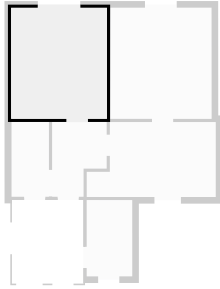
▼ Veranda Erdgeschoss

BREITE: 2.70 m • LÄNGE: 3.16 m
BEREICH: 8.53 m² • UMFANG: 11.72 m

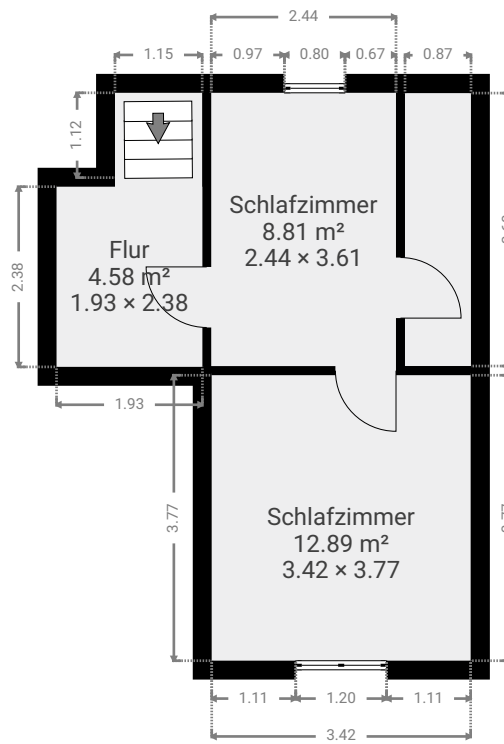


▼ Wohnzimmer Erdgeschoss

BREITE: 3.62 m · LÄNGE: 4.19 m
BEREICH: 15.16 m² · UMFANG: 15.62 m

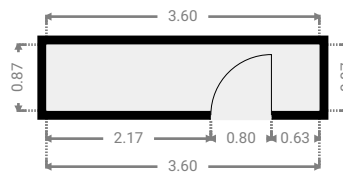
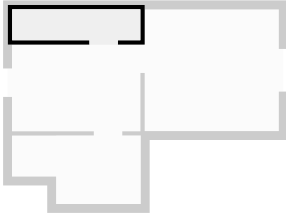


▼ **Dach**



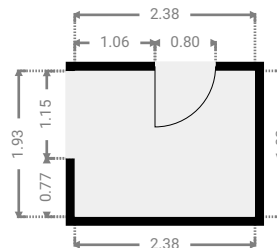
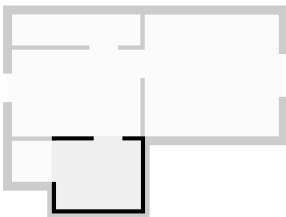
▼ Dachboden Dach

BREITE: 3.60 m · LÄNGE: 0.87 m
BEREICH: 3.14 m² · UMFANG: 8.95 m



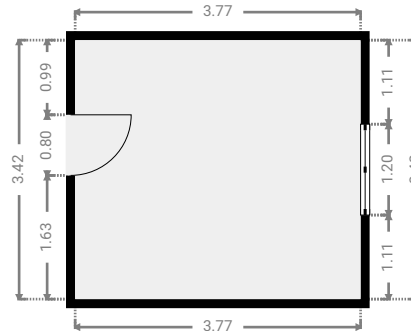
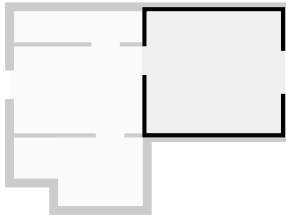
▼ Flur Dach

BREITE: 2.38 m · LÄNGE: 1.93 m
BEREICH: 4.58 m² · UMFANG: 8.61 m



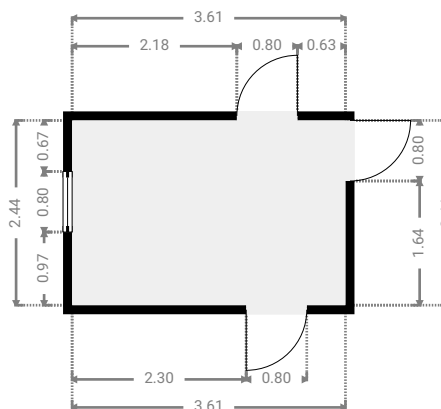
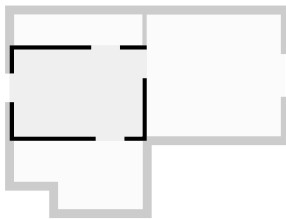
▼ **Schlafzimmer**
 Dach

BREITE: 3.77 m • LÄNGE: 3.42 m
 BEREICH: 12.89 m² • UMFANG: 14.38 m



▼ **Schlafzimmer**
 Dach

BREITE: 3.61 m • LÄNGE: 2.44 m
 BEREICH: 8.81 m² • UMFANG: 12.10 m



Teurow

26 Schulstraße, 15757 Halbe, Brandenburg, Deutschland
ETAGEN: 2

▼ Treppenhaus Dach

BREITE: 1.12 m · LÄNGE: 1.15 m
BEREICH: 1.29 m² · UMFANG: 4.54 m

